



Alderbury Community Orchard

Alderbury Parish Council would like to know your views about our plans to create a community orchard and wildflower meadow on part of the green at Waleran Close.

Overleaf, you will find more details of the trees we would like to plant and the ideas we have for managing the orchard meadow in the future.

Nothing will happen without the support of residents. That is why we are now asking for your views.

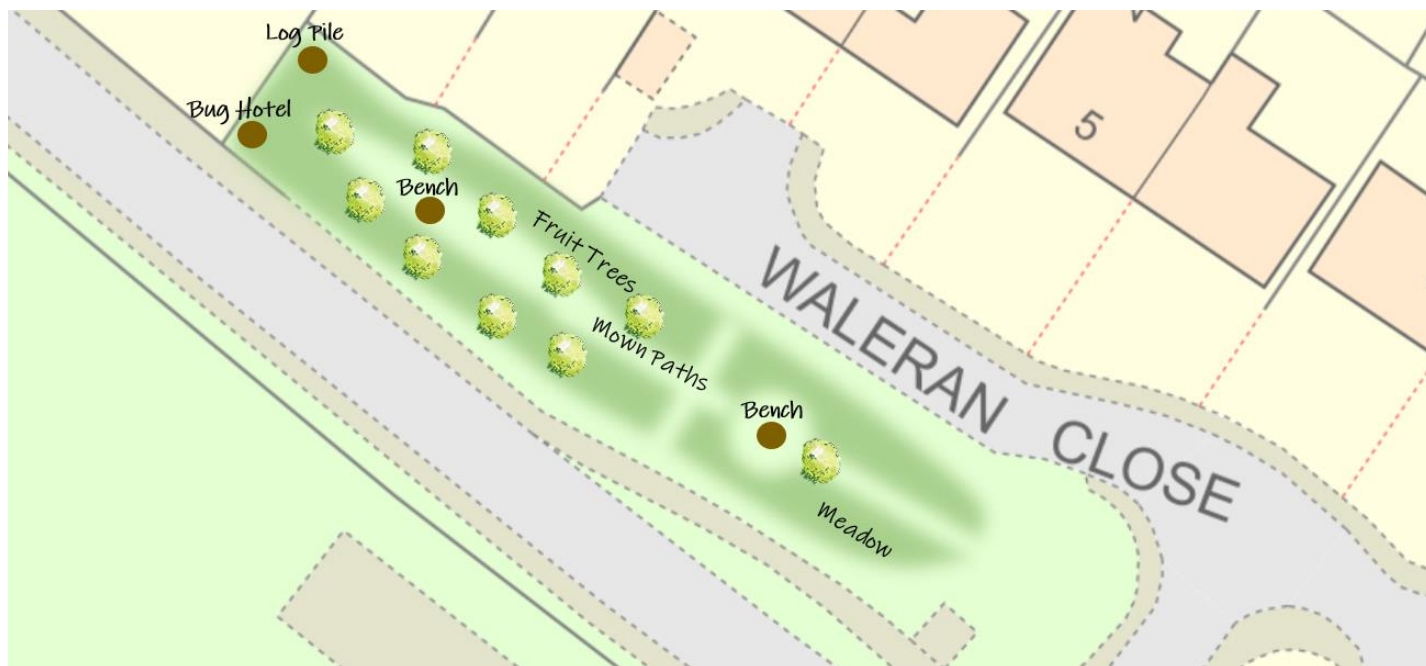
Please take a few minutes to read about our ideas and let us know what you think. The closing date for comments is Sunday 31st October.

Elaine Hartford
Chair of Alderbury Parish Council



Alderbury Community Orchard

The Parish Council is working with the Wiltshire Wildlife Trust to make the village more wildlife and nature friendly. We also want to replace trees we are losing through new development and encourage greener lifestyles. We cannot do this without the support of villagers and, already, 25 locals have volunteered to help – that's a great start! Now the group would like create a community orchard and wildflower meadow on the green at Waleran Close, right in the heart of the village. We have seen other community orchards and we love the way this brings people together. Here is a plan showing how it might look.



The first part of the project would see 10 fruit trees planted – 2 Bramley cooking apple trees, 4 eating apple varieties, 2 pear trees and 2 plum trees. The fruit would be freely available to everyone to collect and use for cooking or juicing. The planting would take place in November. In the Spring next year, the group would like to rake the grass and scatter wildflower seeds on the shaded area. to encourage butterflies and bees – in these areas the grass will be allowed to grow into a natural meadow. Finally, next summer, benches would be placed where people can sit, enjoy the wildlife and have a natter. Neatly mown paths will be maintained to provide access and there will be a wide mown border around the edge to keep things looking smart. And, the lovely spring bulb area maintained by our garden volunteers will remain in all its spring glory.

We would love to know your thoughts because we want everyone to be happy with what is planned. You can email your comments to the parish clerk at clerk@alderburyparishcouncil.gov.uk, post your comments on our website www.alderburyparishcouncil.gov.uk or drop a line to me at the address below.

Elaine Hartford

Chair of Alderbury Parish Council
Ingleside, Junction Road, Alderbury, SP5 3AZ

CLOSING DATE FOR COMMENTS
SUNDAY 31ST OCTOBER